

Sorrento Travel & Cruise



RWANDA & GORILLAS and KENYA & TANZANIA MIGRATION SAFARI

18 JULY 2016

Commences in Kigali, Rwanda and finishes Nairobi Kenya.

Escorted by Liz Bentley.

**Small group tour taking in two of the world's natural wonders – the
Gorillas in the Parc de Volcanoes Rwanda & the great animal
migration from the Serengeti to the Maasai Mara**



Monday 18th July Arrive Kigali Rwanda.

Arrive Kigali, met and transferred to the hotel Serena. Kigali. Afternoon at leisure. Dinner own expense.

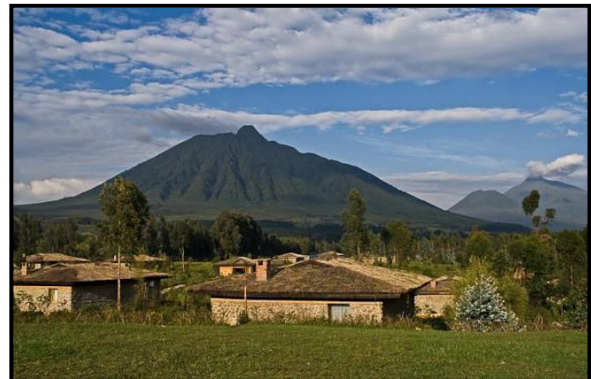
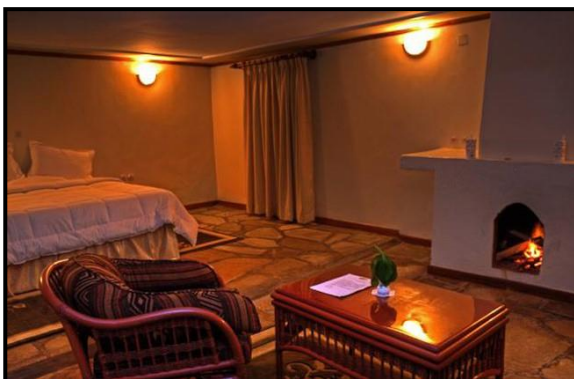


Situated in Central Kigali, the ambassadorial and commercial heart of Rwanda and the city's pre-eminent meeting place for diplomats and business people. The Serena Hotel is situated only 10 km from Kigali International Airport. The accommodation comprises of 104 air conditioned rooms from the Presidential suite, luxury suites to deluxe rooms. The elegant Diplomat Restaurant is open for breakfast, lunch and dinner, while The Lounge Bar offers a choice of three purpose designed areas: the bar, the lounge and the terrace.

Tuesday 19th July Kigali to the Parc de Volcanoes (BLD)

After breakfast a morning tour of Kigali including the Genocide Memorial. We have lunch before proceeding to the Parc des Volcanoes and onto the Twin Lakes of Rwanda, Burera and Ruhondo, situated on the borders of Rwanda and Uganda with their own special attractions. It should be noted that, Lake Kivu is the largest but Burera and Ruhondo are the most beautiful. Their deep blue water is surrounded by high hills. From these come immense water falls that decorate volcanoes in a spectacular way. Here is unforgettable beauty, sublime colors and a fantastic universe of Lakes Burera, Ruhondo.

Then proceed to our overnight accommodation and dinner at Gorilla Mountain View Lodge. Tonight we can have a person from the Karisoke Research Centre come and talk about the Gorillas and Dian Fossey and the ongoing research. This is free however we have to pay for their dinner and drinks (**not included in the cost. Allow about US\$10.00 per person for this**).



The Mountain Gorilla View Lodge is the new midrange lodge in the area and is perfectly situated for gorilla tracking in Rwanda. The 30 individual cottages have been built on 4 acres of land on the slopes of Mt Sabinyo. The stone and thatch cottages each have en-suite facilities, a small lounge with a fire place

and a private veranda. The cottages are of a good size and are well positioned to give them privacy from each other. There is a separate restaurant and bar area where meals served to the guests. Mountain Gorilla View Lodge provides easy access to Parc National des Volcans. Located very close (about 15 minutes) from the main headquarters of Rwanda's Volcanoes National Park (Parc National de Volcans), this is a very handy base from which to explore the area and organise treks to see the Golden monkeys and, of course, the mountain gorillas. This is a great location with superb views of the volcanoes.



Wednesday 20th July Gorilla Trek & return to Kigali. (BL)

Gorilla Trek this morning for those wanting to see the gorillas. An early breakfast meet your rangers at the park headquarters. Assemble for a group allocation and briefing about gorilla tracking. There are over 10 gorilla families and each gorilla family is visited by a maximum of 8 persons per day. You will be divided into groups and allocated gorilla families to track. After the briefing, you will drive to the trekking starting point. The distance to here depends on which gorilla group you are going to track but normally takes 15-40 minutes. The trek in search for these gentle giants takes between 1-3 hours depending on the movement of these gentle giants in their natural habitat. The trek in search for gorillas can be strenuous as you go through steep and slippery jungle ground. However, the thrill of encountering these gentle gorillas in their natural habitat is worth the effort. An hour is allowed to stay with them for photographing, observation and enjoy them feeding and young ones swinging on tree branches.

Those not trekking can walk the grounds of our hotel, and soak up some of the local culture, visit the National park headquarters and surrounding areas (and maybe see some golden monkeys) or enjoy an additional coffee and relax. The trekkers return to the Mountain Gorilla Lodge around lunch time then we make our way back to Kigali for overnight and dinner at the Serena Hotel.

The Gorilla fee is not included in the cost – it is currently US\$750.00 per person and the permit must be booked when the deposit is paid for the tour
A very good level of fitness is required for this gorilla trek.

Thursday 21st July Kigali to Nairobi (BD)

Fly to Nairobi. After breakfast an early transfer to the airport for our flight to Nairobi departing at 9.20am. Transfer to our hotel and the afternoon is free for you to enjoy Nairobi. I suggest evening drinks at the Lord Delamere Bar at the Norfolk Hotel. (own expense). Built in 1904 the colonial days are still apparent and you can meet the locals.

Lunch is at your own expense today. Dinner is included at a nearby restaurant..

Accommodation is at the Stanley Sarova in downtown Nairobi.



Sarova Stanley launched itself into Kenyan history in 1902 by becoming the first luxury hotel in Nairobi and the gracious host of prominent world leaders, renowned authors, and international celebrities. These early years depicted the dawn of a new era, and Sarova Stanley immediately distinguished itself as a beacon of luxury and unrivalled hospitality.

Since the early 1900s when Sarova Stanley opened its doors, the hotel's permanence in Nairobi became clear, and the Victorian façade was quickly expanded to embrace the immeasurable greatness that originated within its walls. 1922 saw the first order of a locally brewed beer, and the hotel's authentic Exchange Bar sowed the seeds that grew into Nairobi's first and only Stock Exchange.

Friday 22nd July 2015

Nairobi

(BL)

After breakfast visit the Elephant Orphanage started by Daphane Sheldrick, Giraffe Manor famous for the Rothschild's Giraffe and being all things "out of Africa" we visit Karen Blixen's House in the Ngong Hills. Lunch is included today. Overnight accommodation at the Stanley Sarova Hotel.

Saturday 23rd July

Nairobi to Ngorongoro Crater

(BLD)

Another early breakfast we transfer to Wilson airport for a flight to Mt Kilimanjaro for lunch before proceeding to the Ngorongoro Conservancy and our accommodation at Lemala Camp on the side of the crater. A key advantage of staying at Lemala Ngorongoro is the quick and easy access into the crater. Game drives from the camp may start as early as 6.15am and there is no time wasting at the gate as you can drive straight down to the floor within 10 to 15 minute. Lemala guests usually have an hour's head start over others in the morning, which is crucial for photographers who demand the best light.

Accommodation Lemala Tented Camp – all inclusive full board and all drinks/beverages included.



Lemala Ngorongoro is an intimate seasonal camp set in a delightful ancient acacia forest on the rim of the crater, next to the quiet Lemala access route. The camp has been re-furbished recently with new tents and furnishings and offers accommodation in 9 spacious canvas tents ensuring intimacy and minimal impact on the pristine forest environment.

The new tents can now accommodate two queen beds or a king bed which have warm duvets and hot water bottles. There is a gas heater to warm up the tents in the evening, wooden flooring with rugs and 24-hour solar lighting. The roomy en-suite bathrooms contain a dressing area, flush toilet and a large safari shower..

The mess tent is beautifully furnished with grand sofas, lamps, bookshelves and corner cabinets in old wood, chests and rugs. In the evening, guests gather around the campfire for cocktails before dining under chandeliers with the camp manager. House beverages are included at meal times. The camp works closely with the local Masai community and often there are dances and talks on Masai traditions and ceremonies providing guests the opportunity to interact with the tribe. Escorted walks are also available from the camp into the forest and along the crater rim with an armed ranger and a Masai to enjoy spectacular panoramic views.

Sunday 24th July

Ngorongoro Crater

(FB)

Full day game viewing in the Ngorongoro Crater with picnic lunch. The volcanic crater is the largest unflooded and unbroken caldera in the world. About 20kms across, 600 meters deep and 300 sq kms in area, the Ngorongoro Crater is a breathtaking natural wonder. The legendary annual wildebeest and zebra migration also passes through Ngorongoro, Conservancy when the 1.7 million animals move south into the area in December then move out heading north in June. The migrants passing through the plains of the reserve include 1.7 million wildebeest, 260,000 zebra, and 470,000 gazelles.

Accommodation Lamala Tented Camp.



Monday 25th July

To the Serengeti

(FB)

Onwards today and after breakfast drive through the magnificent Serengeti National Park. Our drive will take most of the day with a have a picnic lunch. The Serengeti ecosystem is one of the oldest on earth. The essential features of climate, vegetation and fauna have barely changed in the past million years. Early man himself made an appearance in Olduvai Gorge about two million years ago. Some patterns of life, death, adaptation and migration are as old as the hills themselves. It is the migration for which Serengeti is perhaps most famous. Over a million wildebeest and about 200,000 zebras flow south from the northern hills to the southern plains for the short rains every October and November, and then swirl west and north after the long rains in April, May and June. So strong is the ancient instinct to move that no drought, gorge or crocodile infested river can hold them.

Accommodation at Lemala Serengeti Tented Camp.



Lemala Mara is the ultimate seasonal camp in Serengeti, within touching distance of the Mara River and set under large Euclea trees in the heart of the best game viewing area of the Northern Serengeti. Here, in this immense remote wilderness, almost double the size of the Masai Mara, guests can enjoy fabulous landscapes and terrific game viewing with practically no crowds. Resident wildlife numbers are exceptionally high, with prides of lion up to 30 strong, but nothing compared to when the migration starts arriving from June onwards. The area then turns into a wildlife paradise par excellence until November when the migration heads back south leaving behind a healthy population of resident predators and grazers. The migration and resident game affirm this area's reputation as one of the finest in Africa.

Two of the largest crossing points on the river are nearby and occasionally guests may observe the exciting crossings from the comfort of the camp. The spectacular Lamai triangle, Wogakuria kopjes and Kogatende airstrip are all very easily accessible.

Lemala Mara's naturalists/guides have exceptional local knowledge, enabling them to take guests to where the action is, in open 4x4 vehicles, away from the crowds. Lemala's vehicles are specifically designed for long game drives and come equipped with comfortable seats, charging units and a large refrigerator.

The camp organizes great picnic breakfasts and lunches for those who want to go on full day game drives. Private vehicles can be booked in advance at extra cost and are subject to availability.

Lemala's high specification mobile tents are some of the most spacious and comfortable seasonal tents in Tanzania. Each tent is fitted with 2 double beds or 1 king size leather bed, warm duvets, flush toilet, large safari shower, running water, wooden cabinets and flooring, 24-hour solar lighting, outside lounge, games table and much more.

The mess tent has separate living and dining areas with a central bar and is beautifully decorated with leather sofas, chandeliers, side cabinets, rugs and chests. In the evening, guests gather around the campfire for sundowners to share the day's experiences before retiring to the dining room for some wine and delicious food.



Tuesday 26th July & Wednesday 27th July

In the Serengeti game viewing.

(FB)

Accommodation Lemala Serengeti Camp.



Thursday 28th July

Serengeti to the Maasai Mara

(FB)

Transfer to the Maasai Mara by via (short flights) to Tarime and Migori. Arrive and transfer to your camp. The Maasai Mara is like to roof top of the world – you can see forever. Maasai Mara (Masai Mara) is situated in south-west Kenya and is one of **Africa's Greatest Wildlife Reserves**. Together with the Serengeti National Park in Tanzania it forms Africa's most diverse, incredible and most spectacular eco-systems and possibly the world's top safari big game viewing eco-system. It is named in honor of the Maasai people and their description of the area when looked at from afar: "Mara," which is Maa for "spotted," an apt description for the circles of trees, scrub, savanna and cloud shadows that mark the area.

Accommodation is at Nalepo Tented camp inclusive of all meals and drinks.

The camp is on a bend in the Talek River which is fabulous for game viewing



enjoying private verandas and great river views.

Nalepo Mara Camp is a stylish tented camp situated in Kenya's Maasai Mara. Set on the banks of the Talek River, Nalepo is a small, friendly bush-camp with just six safari tents, each

Nalepo Mara Camp is nestled amongst riverine bush on the banks of the Mara's iconic Talek River. Game regularly comes through camp to drink, and the six tents all have great views of the river and surrounding bush. The main tent has a stylish living and dining area. During the dry months, sundowners and meals are normally enjoyed outside, on the river banks. With hippo grunting in the pools below, this an atmospheric place to end a day on safari in Kenya!

Game viewing is the focus at Nalepo and game drives are tailored to suit guests. If there is something you really want to see or do during your safari, the experienced Nalepo safari guides will try their utmost to make sure it happens. Bush meals and safari sundowners can be arranged and are often enjoyed in conjunction with a game drive.

The camp is located only a few kilometres from one of the famous wildebeest crossings which take place during the migration. The prime time to witness this unbelievable spectacle is from July through to October as the wildebeest cross into the Maasai Mara in search of fresh pastures on the Mara plains, before heading back to the Serengeti in Tanzania by the end of October.

Quality linens combine with vibrant local materials to ensure an authentic experience with all the pleasures of comfortable living. The tents are all en suite with piping hot safari-style showers for the end of a long safari day.

Friday 29th July & Saturday 30th July In the Mara game viewing (FB)



Sunday 31st July Sadly we say goodbye and fly back to Nairobi for our onward flights.

COSTS: Based on 2015 rates with a projected cost for 2016. All in AUD\$.

Rwanda and East Africa Safari including the airfare from Kigali to Nairobi: **\$18948.00**

Based on twin share basis. This is based on a minimum of 10 people travelling in East Africa.

The Rwanda/East Africa tour will be fully escorted by Liz Bentley.

Rwanda/Kenya/Tanzania Tour Inclusions

Flight in economy class from Kigali to Rwanda

All transfers as per itinerary

Meals as per the itinerary in Rwanda

Sightseeing in Kigali/Rwanda/Nairobi as per the itinerary.

Accommodation in Rwanda with breakfast plus other meals as mentioned

Dinner in Nairobi in the 01st Night

Accommodation in Nairobi on Bed and Breakfast basis on 2nd night

All meals during Safari in Tanzania & Kenya

Transport & Game drives in a PRIVATE 4x4WD safari vehicle in Tanzania

Game drives at Nalepo camp using Nalepo camp vehicle & driver guide

Schedule flight Flight: Wilson – Mt Kilimanjaro airport (Baggage allowance 15Kg PP in soft bags)

Schedule flight: Grumeti (Serengeti) - Tarime (Baggage allowance 15Kg PP in soft bags)

Schedule flight: Migori – Masai Mara (Baggage allowance 15Kg PP in soft bags)

Schedule flight: Masai Mara – Wilson (Baggage allowance 15Kg PP in soft bags)

Sundowners, Bush Breakfast, Nature walks & laundry at Nalepo camp

Soft drinks, Beer & House Wine at Ngorongoro Lemala, Serengeti Lemala & Nalepo camps

Park Fees

English speaking driver guide

Gratuities throughout.

Rwanda/Kenya/Tanzania Excludes;

- Laundry & Drinks unless mentioned / stated in the itinerary.
- Portage
- Telephone Bills and items of personal nature
- Visa Fees
- All International and Domestic flights - other than Kigali to Nairobi and those flights included in the itinerary in East Africa
- Any other services not mentioned above including travel insurance
- * Gorilla Trekking Fee which is US\$750.00 per person.

Please note: You need to advise at the time of booking if you want to do the Gorilla Trek and the US\$750.00 (as converted to AUD\$ at the time of booking) is payable at the same time the deposit is made. Gorilla Permits are very limited and it is not possible to purchase them on arrival in Rwanda. A good level of fitness is required to do the Gorilla Trek.

Zanzibar Optional Pre/Post tour:

Costs based on 2 people travelling together: \$1450.00 per person based on twin share - *not including flights to and from Zanzibar* - accommodation subject to when this is taken. The cost is subject to confirmation at the time of booking. If you want to go to Zanzibar you will need to go prior to arrival in Kigali or at the end of the East African Safari. This will not be escorted and will be independent arrangements.

3 nights at the Serena Hotel Stone Town with breakfast

Return airport transfers

Half Day Spice Tour

Half Day Dhow trip

Medical Information

Please talk to your medical practitioner however you are required to have a yellow fever vaccination for this safari (or you will not be permitted return entry to Australia or indeed into any Southern African country)

Passport & Visa Information.

Clients travelling on this trip a visa for Rwanda and Tanzania (obtained prior to departure from Australia) and a Kenyan visa is received on arrival in Nairobi. If you travel onward to South Africa you require 3 consecutive blank non-endorsed pages in your passports for Entry/exit to South Africa. All passports must be valid for 6 months after date of departure from Africa.

Dietary & Medical Requirements.

It is imperative that any dietary or medical requirements be advised well ahead of time.

Airline & taxes: are included in the airfares in the itinerary. These are subject to change without notice and due to currency fluctuations. Adjustments for taxes, ie more or less will be made at the time of final payment.

Travel Insurance: is compulsory and must include unlimited medical, additional and evacuation insurance. If you do not take the insurance out with Sorrento Travel & Cruise you must advise us of the insurers name and policy number.

Your Tour Guide: Liz is- well known for her love of all things Africa and has lead a number of groups throughout the world and visited Africa many times. Liz has had 40 years working in tourism and hospitality within Australia and overseas and has been with Travelscene Sorrento Beach for 9 years and enjoys showing clients the wonders of Africa.

This itinerary should be read in conjunction with the Terms & Conditions for the tour and a completed signed booking form is required at the time the deposit is paid. The deposit required on this tour is \$2500.00 per person and is subject to the cancellation fees as per the Terms & Conditions. The gorilla permits must be paid for at this time as well – US\$750.00 – at the current exchange rate. A further payment of \$3000.00 must be paid by 17 November 2015 and the final payment will be by 17 April 2016.

Please note that all costs are costed at the exchange rates current as 01 April 2015 and all costs are subject to change without notice due to currency fluctuations increase in fares/taxes & surcharges We reserve the right to amend the accommodation/routing/sightseeing in this itinerary as and when required. This group is based on a minimum of 10 people travelling.

FOR ALL BOOKINGS CONTACT:

Sorrento Travel & Cruise



Elizabeth Bentley
9 George Street
Sorrento Vic 3943

Tel: 03 5984 3366 Fax: 03 5984 3012

Email: liz@sorrentotravel.com.au