

# Sorrento Travel & Cruise

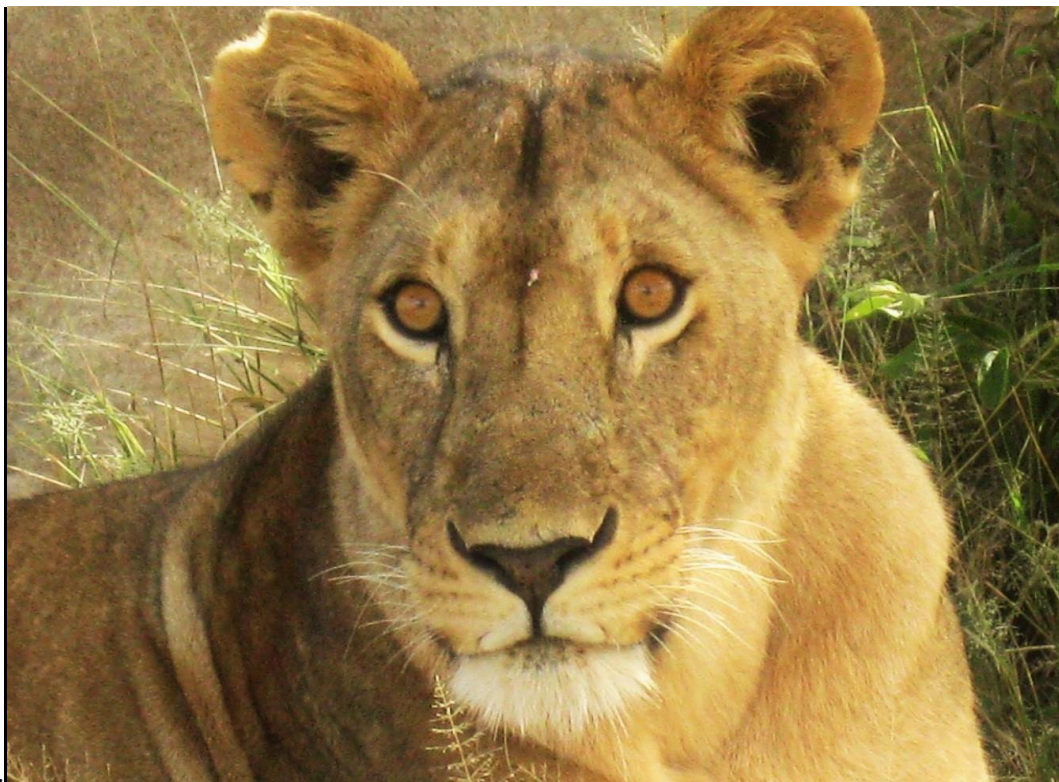


## **Fabulous Southern Africa** **15 JUNE TO 01 JULY 2017**

**LAND ONLY COST:** AUD\$14880.00 per person based on twin share accommodation

Blue Train Optional Journey available.

**TOUR LEADER: Liz Bentley**



### **Highlights:**

Cape Town and the fabulous Western Cape  
Moremi Reserve in Botswana  
Victoria Falls  
Hwange National Park Zimbabwe  
Gratuities included  
Many meals.  
Professional Guides & Tour Leader  
Visit to a local community & school in Zimbabwe

Wednesday 15 Jun 2017

Welcome to Cape Town!

On arrival you will be met by your guide and transferred to your hotel. (Check in is from 15h00 onwards)

#### **Welcome to the Victoria & Albert Waterfront... known as the V & A.**

Situated between Robben Island and Table Mountain in the heart of Cape Town's working harbour, the V&A Waterfront has become one of South Africa's most visited destinations. Since 1988, the harbour is continually undergoing changes, with the redevelopment of land and the restoration of buildings surrounding the original Victoria & Alfred Basins, creating a mix of shopping and entertainment venues, intermingled with imaginative office locations, world-class hotels and luxury apartments in the residential marina.

Aside from the myriad of shops, restaurants and bars, there is a more cultural side to the Waterfront, focused around the historic Clock Tower, which was the original Port Captain's Office in 1882 and part of a collection of well-preserved turn of the century buildings. It is near here that the ferries depart for Robben Island (from the Nelson Mandela Gateway), while the Two Oceans Aquarium is a short walk from here. With ferries and boats continuously on the go, and a mix of both locals and international visitors, the Waterfront is a wonderful place to soak up some typical Cape Town vibe.

#### **Table Bay Hotel**

**Accommodation** 4 nights in Luxury Room/s

**Meal basis** Bed & Breakfast

**Arrival** 15 Jun 2017

**Departure** 19 Jun 2017



The Table Bay Hotel is a five star hotel located on Quay 6 at the Victoria and Alfred Waterfront in Cape Town. Perfectly positioned, the Table Bay Hotel is surrounded by the working harbour, views onto Table Mountain and the Atlantic Ocean.

Combining Victorian grace with contemporary charm, the Table Bay Hotel includes 329 rooms and suites over various floors and room categories. Rooms and suites vary in size and views; all feature king size double or twin beds, en-suite bathrooms with marble finishes and separate bath and shower, air-conditioning, minibar, satellite television, tea and coffee facilities, a writing desk and 24 hour in-room dining. Hotel guests have access to The Lounge overlooking the harbour, The Conservatory for stylish dining, The Atlantic Grill for breakfast, The Pool Bar, Union Bar, swimming pool and Camelot Spa.

With direct access into the V & A Waterfront shopping area guests also have a choice of top restaurants, boutique shops and tourist attractions. The Table Bay Hotel offers a complementary, scheduled shuttle service to some of Cape Town's nearby streets. **Please note:** Please be advised that Table Bay is a non-smoking hotel. Should guests request a smoking room, a cleaning fee of R1000.00 (subject to change at any given time) will be levied

16 Jun 2017

## City & Table Mountain Tour & Robben Island Tour



Explore the city of Cape Town, known affectionately as the Mother City.

Your tour will take in the Houses of Parliament, the Castle (built between 1666 and 1679, this is South Africa's oldest building), the lively Greenmarket Square with its daily market, the Company Gardens and of course Table Mountain, which will give you spectacular views over the city and the Peninsula. (the cable car fee is included but it is weather dependent).

As you come back down from the mountain, make a stop at Bo-Kaap, home to the Cape Malay community, with its cobbled streets and brightly coloured houses. From here you have the choice of being dropped off at the Waterfront to experience this vibrant location at your own pace, with its many shops, restaurants and pubs

Enjoy lunch at one of the local restaurants. (own expense).

---

## Robben Island Excursion



This intriguing excursion begins at the Clock Tower, also known as the Nelson Mandela Gateway, in the V&A Waterfront, where you need to gather at least a half an hour before the ferry is scheduled to depart for Robben Island. The Island was a training and defence station in World War 2, and has also served as a place of banishment, isolation and imprisonment, which became world famous as the prison where Nelson Mandela was held for 18 years.

Today it is a World Heritage Site and museum which acts as a focal point of South African heritage. It runs educational programmes for schools and facilitates tourism development - a poignant reminder of the price paid for freedom. As your ferry arrives at the Island, you are joined by a local guide, someone who spent time there during the Apartheid years and is thus able to give a personal and often moving account of the experience. You will also see the cell where Nelson Mandela spent a large part of his life. After a most interesting time of gleaning 'behind the scenes' history, the ferry takes you back to the V&A Waterfront.

---

17 Jun 2017

#### Cape Point & Peninsula Tour: Full Day including Lunch



Today you embark on a full day tour of the Cape Peninsula. Take in the beaches of Clifton and Camps Bay, before crossing over to Hout Bay, where you may choose to join an optional boat cruise to Seal Island. From here you drive to the Cape of Good Hope Nature Reserve via Chapman's Peak, one of the world's most breath-taking coastal drives, where you will board a funicular (optional and for your own account) to get to the top of the Peninsula to witness the symbolic meeting of the Indian and Atlantic Oceans and enjoy spectacular views over False Bay. After lunch (at one of the local restaurants), continue to Simonstown, the naval base, and visit the African Penguin breeding colony at Boulders Beach.

Then stop at the world-renowned Kirstenbosch Gardens before arriving at your hotel for overnight.

18 Jun 2017

Spend the day at leisure or join one of the optional tours – Township Tour, Malay Cooking Course & the Malay sector or take the time to wine & dine in some of Cape Town's fabulous restaurants.

19 Jun 2017

Enjoy an early breakfast at the Hotel before checking out and departing for the day. We make our way to Swellendam via Stellenbosch and Franschhoek. We stop at one of the famous wine estate for a wine tasting followed by a tasty lunch.

We continue on our way to Swellendam the third oldest town in South Africa proclaimed a magisterial district in 1743. Arrive at the Hotel and check in. Remainder of the afternoon is at leisure to take in the Cape Dutch architecture and the amazing surrounding countryside nestled at the foot of the Langeberg Mountains.

#### De Kloof Luxury Estate

Accommodation	1 night in Luxury Room/s
Meal basis	Bed & Breakfast
Arrival	19 Jun 2017
Departure	20 Jun 2017



**Includes:** Welcome drink and Breakfast with bubbles and newspaper.

20 Jun 2017

Enjoy a leisure breakfast at the hotel before driving to Hermanus.

#### **Welcome to Hermanus...**

Archaeological evidence found at the nearby Klipgat Cave shows that the Khoi-San were the earliest inhabitants of the area, but the town of Hermanus was originally founded in the early 1800's, by a shepherd called Hermanus Pieters and the protected bay was named after a Royal Naval officer called Walker.

Today the charming town has earned the status of being the best land-based whale watching destination in the world. Southern right whales visit Walker Bay from June through to December when the world's only Whale Crier blows his kelp horn to alert the town when the whales are spotted. The whales use the sheltered bay to calf and it is not uncommon to see pods of 50 or more in the peak months, with whales occasionally coming as close as 50 metres to the cliffs. Highly recommended is the "Hermanus Wine Wander" in the nearby beautiful Hemel and Aarde valley, which introduces guests to the most southerly estates in Africa, including Hamilton Russell and Bouchard Finlayson.

**We have lunch in Hermanus before a leisurely drive along the coast to Cape Town.**

#### **Table Bay Hotel**

**Accommodation** 1 night in Luxury Twin Room/s

**Meal basis** Bed & Breakfast

**Arrival** 20 Jun 2017

**Departure** 21 Jun 2017



**Please note:** Please be advised that Table Bay is a non-smoking hotel. Should guests request a smoking room, a cleaning fee of R1000.00 (subject to change at any given time) will be levied.

Wednesday 21 Jun 2017

Enjoy breakfast at the Hotel before being transferred to Cape Town Airport for your flight:

Flight: Cape Town to Maun in Botswana.

Arrive in Maun where you will board your charter flight to the Lodge.

#### **Welcome to Botswana...**

Botswana is a land-locked country, bordered by Zambia and Zimbabwe to the northeast, Namibia to the north and west, and South Africa to the south and east. Botswana has placed strong emphasis on its deliberate "high price – low impact" policy in order to successfully preserve its fragile eco-systems and rich wildlife. This makes the country a highly sought after, truly African wildlife experience, living up to its status as the "Gem of Africa".

There are an incredible variety of great National Parks to visit, the most popular being the Moremi Wildlife Reserve and the Okavango Delta, which is the world's largest inland delta, a seasonal wetland of channels, palm lined islands and wide grassy floodplains, visible from outer space.

The Chobe National Park is to the north of the country and is home to the largest elephant herds in the world. This Park boasts four distinctly different eco systems: Serondela with its lush plains and dense forests in the Chobe River area to the northeast, the Savute Marsh in the west and the Linyanti Swamps in the northwest, with the hot, dry hinterland in between.

The Makgadikgadi Pans National Park is situated between Maun and Nata, in northern Botswana. These great thirstlands cover some 4,900 square kilometres of lifeless land which transforms when the rains come in mid-November. They retain their water into April or May, attracting a spectacular array of water birds and stimulating dramatic migrations of wildebeest and zebra.

### Khwai Tented Camp

Accommodation	3 nights in Luxury Meru Tent/s
Meal basis	Fully Inclusive
Arrival	21 Jun 2017
Departure	24 Jun 2017



Khwai Tented Camp is located within the Khwai community concession on the north eastern border of the Moremi Game Reserve. Simple and romantic this is an authentic African experience and the camp blends seamlessly into the stunning setting, with minimal impact on the environment. Khwai offers luxury tented camping, "Hemingway Style." 6 tents are spacious and comfortable, with decks and open air bucket showers, and a fully enclosed family cottage sleeps 4. At Khwai there is a strong sense of being in harmony with nature, the accommodation merely an extension of the natural wilderness. Open-sided communal areas include appealing spaces to unwind whilst gazing out over the lagoon. In the evenings, settle around the fire-pit, listening to the night sounds, and appreciating endless starry skies.

**Includes:** All meals, local brand drinks, 2 scheduled safari activities daily, National Park fees, return airstrip transfers and laundry.

### Saturday 24 Jun 2017

This morning your lodge will transfer you to the landing strip for your flight to Kasane.

Arrive in Kasane where you will be met and assisted to your vehicle. Road transfer to Chobe Marina Lodge.

On arrival at the Lodge, enjoy a cruise on the mighty Chobe River with pods of hippos, elephants and amazing bird life.

After lunch (included), transfer by road to your Hotel in Vic Falls.

Arrive this afternoon and spend the evening at leisure.

## Welcome to Victoria Falls...

The iconic town of Victoria Falls, which is affectionately known as "Vic Falls", is set on the southern bank of the Zambezi River, at the western end of the mighty Victoria Falls. Zimbabwe's prime tourist destination and a magnet for visitors from around the world Vic Falls has a rich and romantic history. Discovered in 1855 by explorer and missionary David Livingstone, the railway from Cape Town arrived in 1904 and the landmark 198 metre long Victoria Falls Bridge, spanning the immense Zambezi River gorge and linking Zimbabwe with Zambia, was built in 1905.

One of the Seven Natural Wonders of the World and a UNESCO World Heritage Site, the Victoria Falls is one of Africa's greatest geographical features. At 1700 metres wide and over 100 metres in height visitors cannot fail to be inspired and amazed by the sheer size, power and beauty of the thundering curtain of water which can be gazed upon from 16 view points along a network of trails through the surrounding rainforest. Reaching their zenith in April/May, the Falls are at their most powerful and impressive between the months of February and July. At high water the dense plume of spray can rise up to 500 metres into the air and is visible from as much as 20 kilometres away, justifying why the falls are still commonly referred to by their local name of Mosi-oa-Tunya - "the smoke that thunders". Even during the low water months of October and November when the Falls become dry for much of their length the view from the Zimbabwe side won't disappoint.

With its welcoming small town atmosphere Vic Falls is home to a seemingly endless number of activities - there is literally something for everyone. The world's wildest white water rafting, canoeing, helicopter flips, elephant back safaris, canopy tours and adventure slides, river cruises, golf and bungee jumping. An impressive array of arts and crafts is showcased by talented local artists in the open air curio market as well as at a number of gallery's and shops throughout town.

## Victoria Falls Safari Club

<b>Accommodation</b>	3 nights in Club Room/s
<b>Meal basis</b>	Bed & Breakfast
<b>Arrival</b>	24 Jun 2017
<b>Departure</b>	27 Jun 2017



Situated within the grounds of the Victoria Falls Safari Lodge resort, only four kilometres from Victoria Falls on the Zimbabwean side, is the Victoria Falls Safari Club. Set high on a natural plateau, the Safari Club borders the Zambezi National Park and overlooks a private waterhole with uninterrupted bushveld views and spectacular African sunsets.

Accommodation is in 20 modern rooms of which four are suites (two sets of rooms and two sets of suites are inter-leading). The rooms feature en-suite bathrooms with separate bath and shower, customized toiletries, air-conditioning, beverage station including an espresso machine, minibar and complimentary WiFi. All the rooms have sliding glass doors and gauze screens leading to a balcony, and the suites include an extra sitting room. Facilities for Safari Club residents include a welcome zone with private check-in, breakfast served in the Safari Club lounge, private deck overlooking the waterhole, bar and light meal service and complimentary afternoon tea, pastries, evening cocktails and snacks. With an emphasis on privacy, residents at the Safari Club have access to all the resort facilities which includes the swimming pool, however no other resort residents have access to the Safari Club wing.

The Safari Club operates a complimentary scheduled shuttle service to and from Victoria Falls, points of interest in the town,

**Includes:** Breakfast, afternoon tea and pastries served from 15.30 –16.30, sundowner cocktails and canapes served from 17.30 – 18.30, in-room mini bar including wine, beer, soft drinks, and bottled water, a courtesy shuttle service throughout the day to Victoria Falls town and the entrance gate to the Rainforest and Falls, head and shoulder or foot massage subject to the availability of spa from 15:30 - 16:30, Wi-fi and laundry.

---

Sunday 25 Jun 2017

**Tour of the Falls: Private 2 Hours**



The Victoria Falls reaches its zenith in about May each year. It is a truly awe-inspiring experience – the sight, the sound, the smell and the humbling feeling that here indeed, is Nature's Supreme Masterpiece. No photograph can begin to depict the reality and nothing prepares you for your first sight. This tour is conducted in the morning and afternoon and is 2 hours in duration. You will be accompanied through the Rainforest by a qualified Guide, who gives a brief history of the Falls and the surrounding flora, fauna, bird and wildlife. Raincoats and camera protective bags are provided when needed.

**Includes:** Transfers from hotels in Victoria Falls town. After our Falls tour your time is at leisure until we transfer for our cruise on the mighty Zambezi River at approximately 4.00pm.

**Sunset Cruise: Scheduled 2 Hours**



Our comfortable cruise vessel with plenty of seating, open sides and a canopied roof. Cruises the river towards Palm Island and Kandahar Island to enjoy a picturesque African sunset on the Zambezi River. This cruise is a superb way to relax and enjoy the beauty of the River, with the opportunity to see a variety of game; including hippo, crocodile, elephant and many different bird species. **Includes:** Finger snacks, a selection of local brand drinks and transfers from hotels in Victoria Falls town

---

Monday 26 Jun 2017

You have the day at leisure.  
There is a list of optional tours available.

---

Tuesday 27 Jun 2017

This morning transfer to Vic Falls Airport where you enjoy a short flight to Hwange. You will be met on arrival and transferred to your Lodge.

## Welcome to Hwange National Park...

The oldest and largest national park in Zimbabwe, the 14 650km<sup>2</sup> Hwange National Park lies in the north west of the country on the ancient animal migration routes towards Chobe and the Linyanti of northern Botswana. There are no natural watercourses in Hwange which means the game is reliant upon the park's network of artificially pumped waterholes when seasonal pans start to dry out.

Hwange is a year round wildlife destination but is definitely at its most alluring between the months of April and October, the dry season, when there are large concentrations of game, especially massive herds of elephant. This time of year is also cooler (it can get very cold in the evening and early morning, although days warm up to 25°C/77°F). The rains, usually beginning in November and lasting through to February/March, tend to take the form of summer thunderstorms rather than lengthy periods of rain. Natural pans and vleis fill up and the game disperses throughout the park, making sightings more sporadic. During this time the south, with its more open plain areas, generally has better game viewing although the north is scenically beautiful, with hills, water lily-filled pans and plentiful bird life.

It is Hwange's varied topography - from arid semi-desert in the west to lush teak forests in the east - that ensures a diverse mix of animal and bird habitats. This extensive wilderness area offers exceptional elephant sightings and supports significant numbers of buffalo, lion, wild dog, cheetah and plains game. Sable and roan antelope are also common and leopard occur in good numbers although are shy and sightings are rare. There are very few rhino left in Hwange and they are therefore hardly ever seen. A notable feature is the exceptional quality of guiding in the park, headed up by Zimbabwean pro-guides, many of whom have returned to the country over the last few years and are amongst the best in Africa.

### Somalisa Camp

<b>Accommodation</b>	4 nights in Tent/s
<b>Meal basis</b>	Fully Inclusive
<b>Arrival</b>	27 Jun 2017
<b>Departure</b>	01 Jul 2017



Authentic and luxurious, Somalisa Camp is a tented bush camp located in a private concession in the heart of Hwange National Park. Nestled within an acacia forest on the edge of a seasonal floodplain, Somalisa looks out over extensive savannah grasslands - excellent elephant territory. Unassumingly blending into the environment, this stylish camp was carefully built to ensure it maintained an uncompromising focus on the beauty of the region, the game experience and excellent guiding. 7 sail tents are charmingly styled with glass wood-burner fireplaces, gauze sliding doors and decadent vintage baths with views. Spacious split-level decks include a lounge and dining area with the ambiance of a bygone era, and stunning vistas over the bush pan. The elevated plunge pool is great for cooling off during summer days and overlooks the elephant drinking pool.

**Includes:** All meals, local brand drinks, 2 scheduled safari activities daily, National Park fees, return airstrip transfers and laundry.

**Please note:** A US\$10.00 per person per night contribution to Hwange's Conservation Wildlife Fund is payable locally on a voluntary basis. Whilst at Somalisa you will have a chance to visit some of the community projects and the Mambanje School and Community managed by the African Bush Camps Foundation. This is a wonderful way to spend some time getting to know more about the people of Zimbabwe.

---

Saturday 01 July 2017

This morning your Lodge will transfer you to Hwange Airstrip for a short flight to Vic Falls Airport.

Your tour ends at Victoria Falls in time for connecting flights to Johannesburg and onward international flights



## TOUR COSTS

**COST;**           \$14,880.00 per person sharing  
                      \$1915.00 single supplement.

**The tour costs are based on a minimum of 10 passengers travelling. All costs are based on exchange rates as of 27 June 2016 and are subject to change without notice. This itinerary must be read in conjunctions with the Terms & Conditions Form for this Tour. Conditions of Travel & Cancellation fees apply to this tour. This form must be signed and returned with your deposit.**

**DEPOSIT:           \$2500.00 per person.**

**Includes:**

5 nights Table Bay Hotel, lux rooms, B&B  
1 night De Kloof Estate, lux room, B&B  
3 nights Khwai Tented Camp, luxury meru tents, Full board with drinks (excluding premium brands)  
3 nights Vic Falls Safari Lodge Club Rooms, B&B  
4 nights Somalisa Camp, tents, Full board with drinks (excluding premium brands)  
Meet and Greet on arrival in Cape Town  
Cape Town City Tour includes SA Museum and The Castle, Table Mountain Tickets (weather permitting) followed by lunch  
Robben Island Tour (weather permitting)  
Full Day Peninsula Tour includes: Boulders Beach, Cape Point, Hout Bay and Chapmans Peak Tolls, Kirstenbosch Gardens and Lunch  
1 wine tasting in winelands followed by Lunch  
Lunch in Hermanus (on 20 June 2017),  
Charter flight Maun to Khwai and Khwai to Kasane  
Group Transfer Kasane to Chobe Marine Lodge  
River Cruise and Lunch at Chobe Marine Lodge  
Transfer Chobe Marine Lodge to Vic Falls Safari Lodge Club  
Morning Tour of the Falls  
Sunset Cruise  
Transfers in Victoria Falls  
Return Flight Vic Falls Airport to Hwange for Somalisa camp  
Hotel Porterage  
Airport Porterage  
Services of a luxury coach in Cape Town/Cape Services with English Speaking Driver  
Services of National Qualified English Speaking Guides in Zimbabwe & Botswana. Gratuities throughout for drivers/guides/tour leaders/camp staff.

**Excludes:**

International flights to and from Africa, ie into Cape Town and out of Victoria Falls.

Visa's and passports

Any items of personal nature

Travel Insurance \*\*\* Please note that this is compulsory.

Any additional meals, entrances, tours or beverages not stipulated on itinerary

## Sorrento Travel & Cruise



9 George Street

Sorrento Vic 3943

Tel: 03 5984 3366 Fax: 03 5984 3012

Email: [travel@sorrentotravel.com.au](mailto:travel@sorrentotravel.com.au)

Website: [www.sorrentotravel.com.au](http://www.sorrentotravel.com.au)